

DC at Your Doorstep

STOUT &
TEAGUE



1400 16th Street NW
Washington, DC
Resources & Conservation Center

 LEED GOLD Certified | Powered by 100% Green Energy |  Energy Star

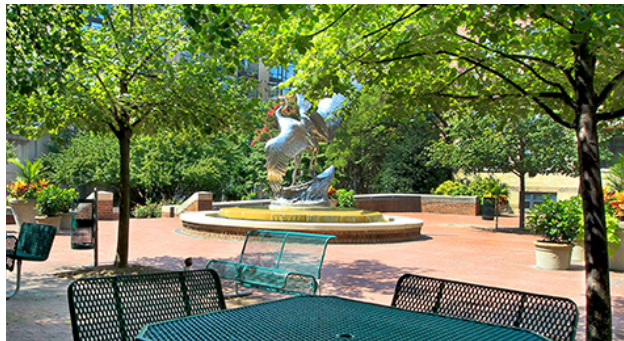
Fresh Renovations & Amenities



LEED GOLD Certified | Powered by 100% Green Energy |



Energy Star



Building amenities: conference center, fitness center with showers, outdoor meeting spaces, casual work areas, on-site deli/cafe, ample parking, on-site management, concierge services. [Take a virtual tour.](#)

SUITE B-01 | 3,680 RSF

1400

16th Street NW
Washington, DC



- Great corner office suite
- direct elevator exposure
- double full view glass door suite entrance.
- reception area
- open area for workstations/cubicles
- closets
- conference room
- kitchenette
- private offices.
- Subdivision opportunities down to approximately 1,222 RSF or 2,458 RSF

[Take a Virtual Tour](#)



LEED GOLD Certified | Powered by 100% Green Energy |



Energy Star



Mollye Schneeberg | 202.328.5136 | leasing@stoutandteague.com
Carter Clarke | 703.226.6707 | cclarke@stoutandteague.com

**STOUT &
TEAGUE**

SUITE ' \$\$ | 8,310 RSF

1400 16th Street NW
Washington, DC

16th Street Views and lots of natural light



Gi jh'' \$\$'GdUW': YUH fYg

- 6fj[\hUbX'U]fm' fX'Zccf' VcfbYf'cZjV'gi jhY
- 8jFYWY'Yj Uhcf'YI dcgi fY
- 9l dUbgjcb'cddcfh b]hYg' k jh' h.Y'UX'UW'bhgdUW' i d'hc'Uddfcl ja UH'm %&ž \$* 'FG: ''
- ; fYUhZcf'bcbl'dfcZjhgž UggcWjUh'cbgž i b]j YfgjhYg#V'Y[Yg'UbX' \j[\Yf'YXi WUh'cb']bgh]ri h]cbg'
- 7'Ugg'5'Ua Yb]hYg'Uh UZcfXUV'Y'fUHyg''

[Take a Virtual Tour](#)



LEED GOLD Certified | Powered by 100% Green Energy | Energy Star

Mollye Schneeberg | 202.328.5136 | leasing@stoutandteague.com
Carter Clarke | 703.226.6707 | cclarke@stoutandteague.com

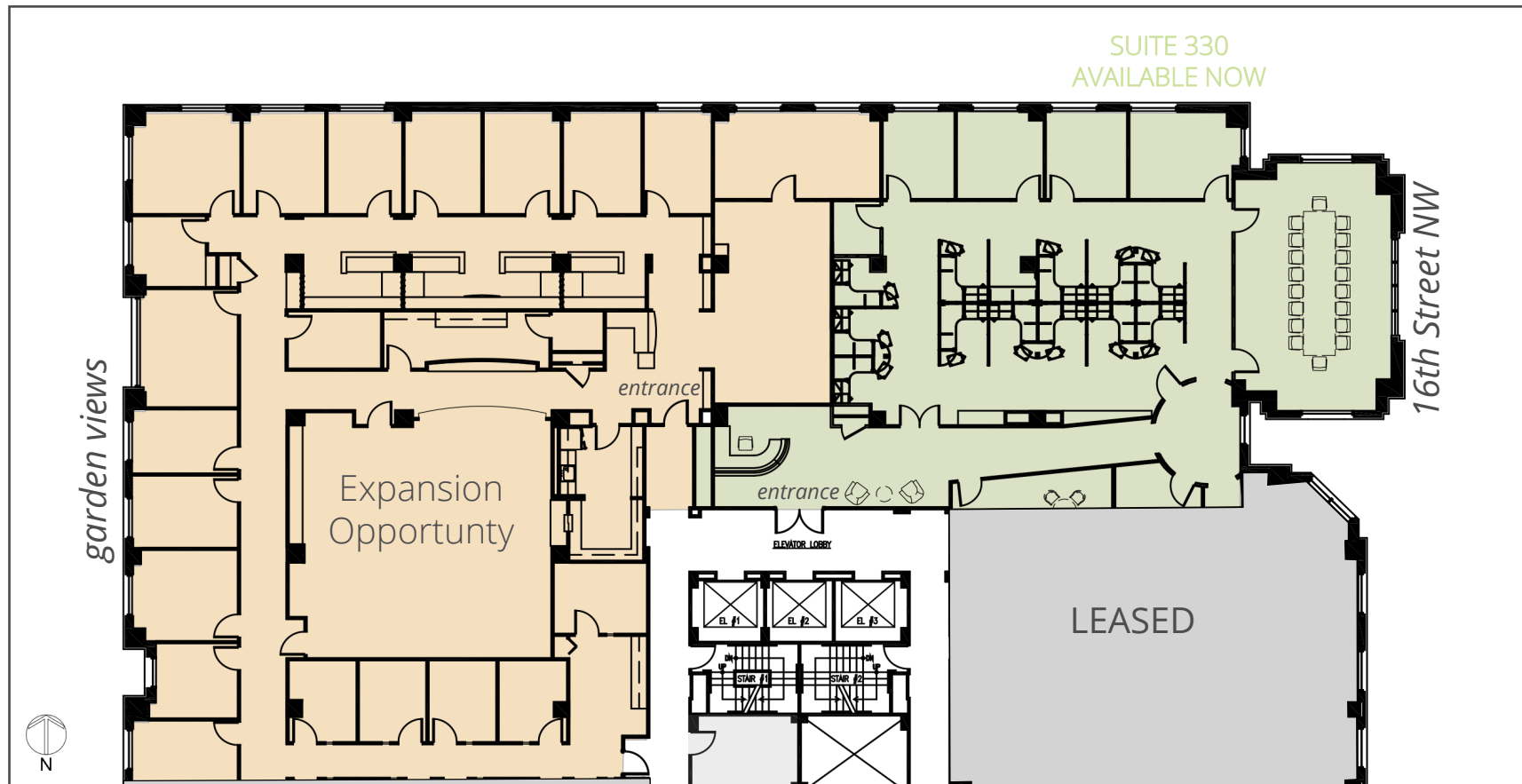
STOUT & TEAGUE

SUITES 330 | 4,196 RSF

1400 16th Street NW
Washington, DC

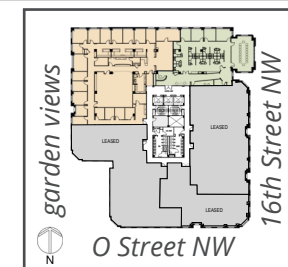
Garden views, 16th Street views, and lots of natural light



[Take a Virtual Tour](#)



Space Features

- Sun drenched corner office suite with incredible 16th Street window line
- Double glass suite entrance with direct elevator exposure.
- Expansion opportunity with the adjacent space up to 12,506 RSF!
Please call for details on potential subdivision options.



 LEED GOLD Certified | Powered by 100% Green Energy |  Energy Star

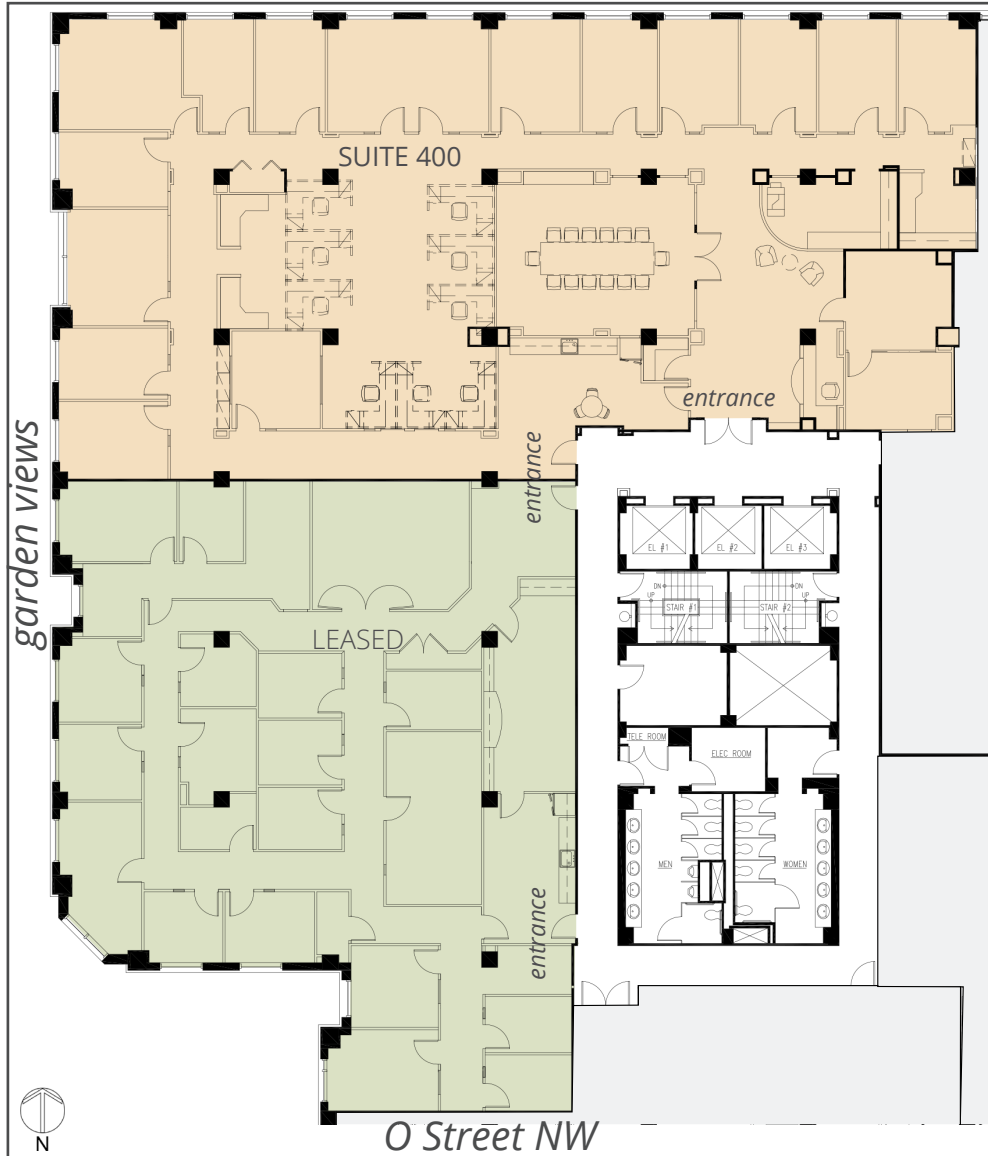
Mollye Schneeberg | 202.328.5136 | leasing@stoutandteague.com
Carter Clarke | 703.226.6707 | cclarke@stoutandteague.com

**STOUT &
TEAGUE**

SUITE 400 | 7,859 RSF

1400 16th Street NW
Washington, DC

Garden views, and lots of natural light

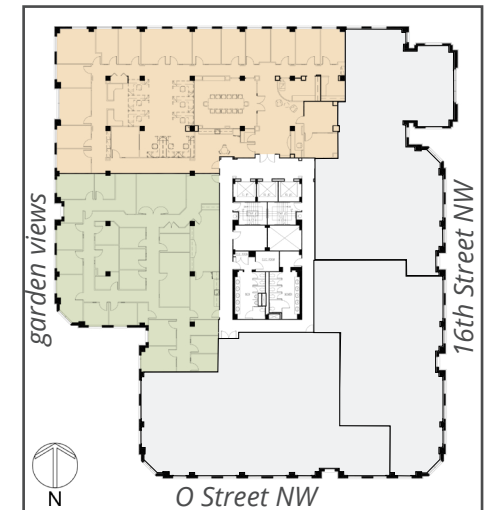


Space Features

- Corner 4th floor office suite with plenty of natural light
- Direct lobby exposure
- Double-glass entry
- Corner suite
- 11 windowed offices
- Additional interior offices
- Workstation space
- Large conference room
- Pantry
- Work and storage areas
- Reception

AVAILABLE NOW

[Take a Virtual Tour](#)



LEED GOLD Certified | Powered by 100% Green Energy |



Energy Star

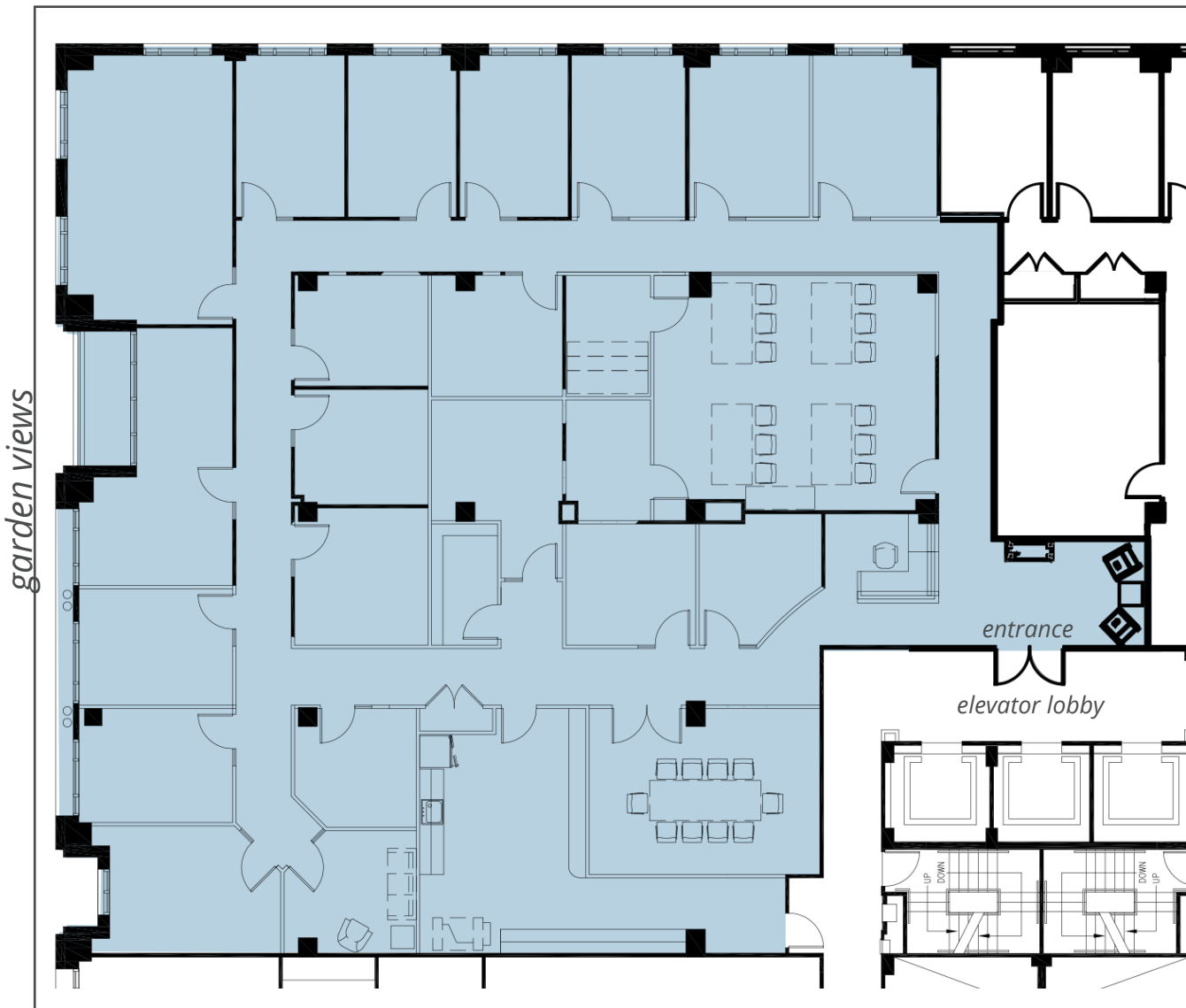
Mollye Schneeberg | 202.328.5136 | leasing@stoutandteague.com
Carter Clarke | 703.226.6707 | cclarke@stoutandteague.com

**STOUT &
TEAGUE**

SUITE 720 | 7,400 RSF

**1400 16th Street NW
Washington, DC**

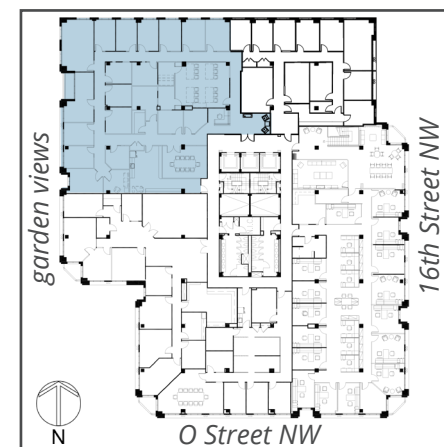
Elevator lobby entrance and garden views



Available Now

Space Features

- 3 Executive offices
- 17 Offices (11 windowed offices)
- 1 Large Conference Room
- 1 Medium Conference Room
- Reception
- Work Room
- Print Room
- Expansive Pantry
- Wellness Area
- Huddle Area
- 2 Storage Areas
- Courtyard Views from the 7th Floor
- Lobby Entrance and Presence



LEED GOLD Certified | Powered by 100% Green Energy |



Energy Star

Mollye Schneeberg | 202.328.5136 | leasing@stoutandteague.com
Carter Clarke | 703.226.6707 | cclarke@stoutandteague.com

**STOUT &
TEAGUE**

Vibrant Dupont Neighborhood

LEED GOLD Certified | Powered by 100% Green Energy | Energy Star





1400 16th Street NW
Washington, DC
Resources & Conservation Center

LEED GOLD Certified | Powered by 100% Green Energy | Energy Star

Mollye Schneeberg | 202.328.5136 | leasing@stoutandteague.com
Carter Clarke | 703.226.6707 | cclarke@stoutandteague.com **STOUT & TEAGUE**