

Downtown DC Office at an Attractive Price

STOUT &
TEAGUE

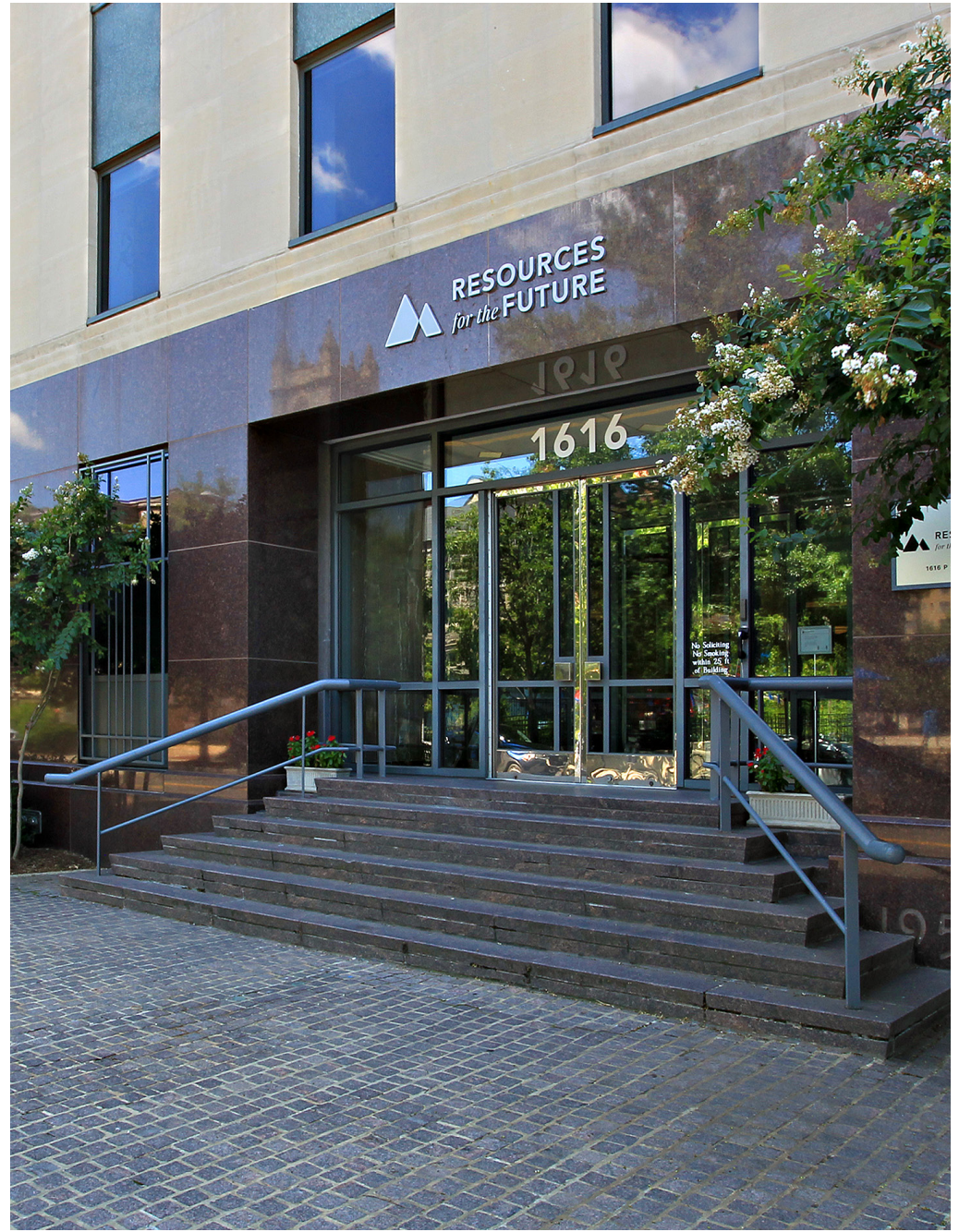
1616P Street NW
Washington, DC



LEED GOLD Certified | Powered by 100% Green Energy | Energy Star

1616 P Street NW Washington, DC

- Owner-occupied
 - Enables attractive rental rates and flexible terms
- LEED Gold and Energystar compliant
- Great location
 - Between the Central Business District and the Dupont Circle neighborhood
 - Less than a 10-minute walk to Dupont Circle Metro, Farragut North Metro, Logan Circle and the 14th Street Corridor
- Best-in-class amenities
 - Conference center, rooftop conference room, outdoor courtyard, fitness center, cafe, underground parking



LEED GOLD Certified | Powered by 100% Green Energy |



Energy Star

Mollye Schneeberg | 202.328.5136 | leasing@stoutandteague.com
Carter Clarke | 703.226.6707 | cclarke@stoutandteague.com

**STOUT &
TEAGUE**

Building Features & Amenities



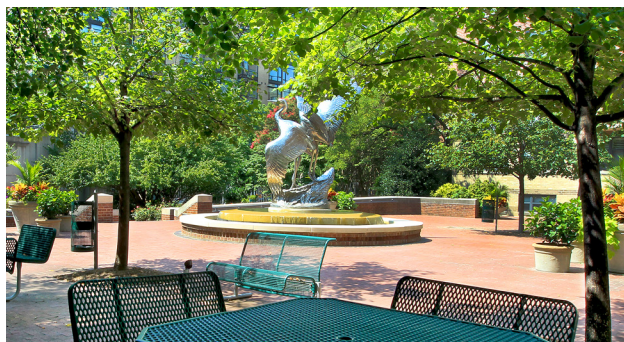
LEED GOLD Certified | Powered by 100% Green Energy |



Energy Star

Tenants have access to all the amenities between both 1616 P Street and 1400 16th Street!

Expansive lobby, conference center, rooftop conference room, outdoor courtyard, rooftop terrace, fitness center with showers, deli/cafe, ample parking, on-site management and concierge service. [Take a virtual tour.](#)



Vibrant Dupont Neighborhood

LEED GOLD Certified | Powered by 100% Green Energy | Energy Star



SUITES 200 & 210 | 1616 P Street NW, Washington, DC

1616 P Street NW
Washington, DC

Lots of natural light with P Street and Stead Park views

Available Now



Suite 200 Features

- 9 windowed offices
- Windowed conference room
- Pantry
- Reception
- Work rooms
- Storage

Suite 210 Features

- 8 windowed offices
- Open work areas
- Reception
- Work rooms
- Storage

Able to divide the space to meet your space needs!



LEED GOLD Certified | Powered by 100% Green Energy |



Energy Star

Mollye Schneeberg | 202.328.5136 | leasing@stoutandteague.com
Carter Clarke | 703.226.6707 | cclarke@stoutandteague.com

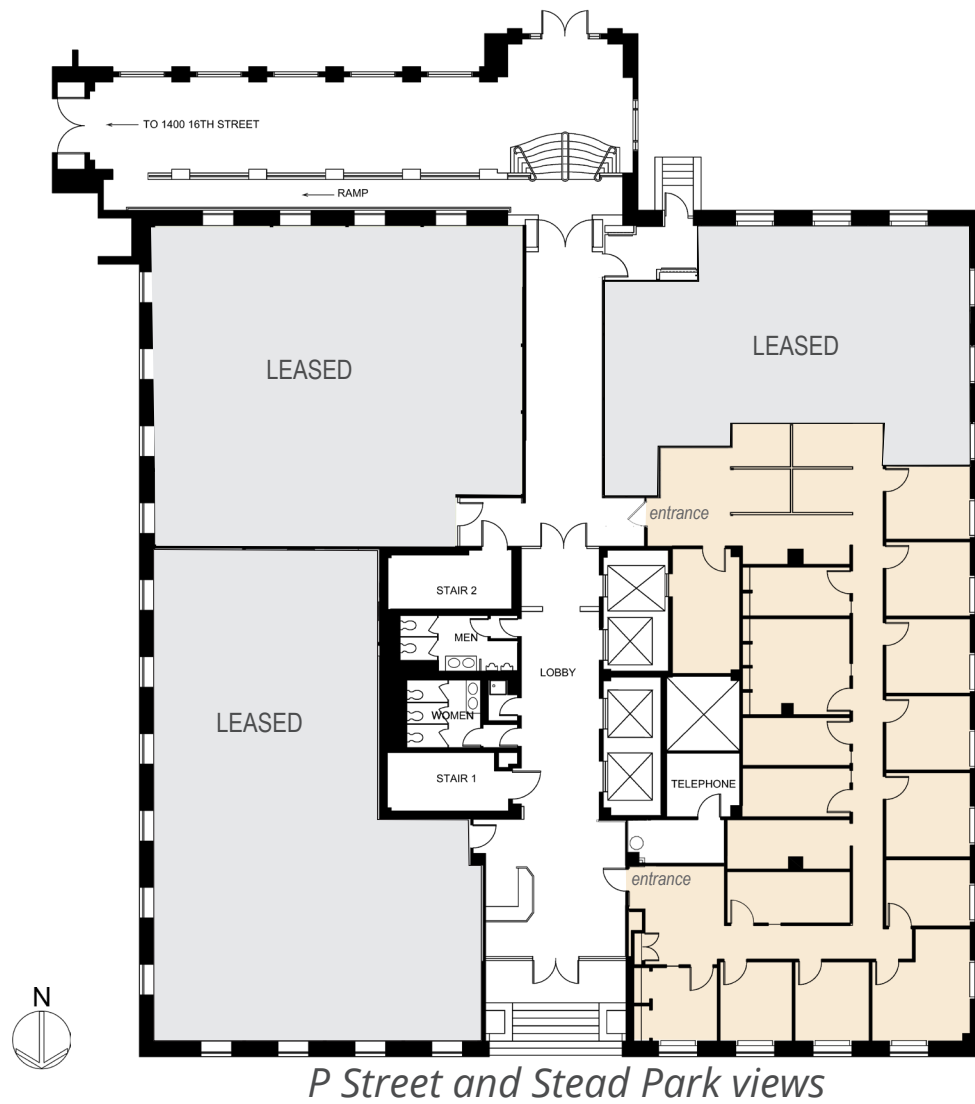
**STOUT &
TEAGUE**

SUITE 150 | 4,061 RSF

1616P Street NW
Washington, DC

Main level convenience with direct lobby exposure

Available Now



Space Features

- Views of Stead Park and P Street
- Access directly off of Lobby
- Ability to divide the unit to meet your space needs!
- 19 offices/work area (10 windowed offices)
- LAN Room
- Huddle rooms
- Storage

SUITE 340 | 2,000 - 5,722 RSF

1616P Street NW
Washington, DC

Lots of natural light with P Street and Stead Park views

Available Now

Space Features

- 15 windowed offices
- Large conference room
- Pantry
- Reception
- Work rooms
- Storage

